

Renegade
RV
REVGROUP

LEGENDARY RENEGADE QUALITY 2020
VERACRUZ



EXTREME LUXURY
EXTREME PURPOSE
EXTREME DURABILITY



If Veracruz had a middle name, it would be Adventure. Born with a legacy of extreme durability and exceptional quality, Veracruz proves that a smaller footprint and a nimble chassis is the ideal foundation for a serious, fun-seeking touring coach. When the unpaved road calls your name, Veracruz answers with the 4 wheel drive capability of the Ford F550 Super Duty chassis and plenty of “Go Power” from the 6.7L Power Stroke V8 diesel engine. Remember, getting there is more than half the fun!



ADVENTUROUS GETAWAY

The adventurous spirit of the Veracruz features a comfortable and stylish design including a slide a bed sofa that converts to a queen bed. A 48" x 76" Slide n' Store cabover bed makes a great guest room, and stores neatly out of the way within a recessed pocket when not in use, allowing the cabover area to double as a great storage space.

VERACRUZ AT A GLANCE

EXTERIOR HEIGHT	<12' 1">
EXTERIOR WIDTH	<100">
EXTERIOR LENGTH	<35' 5">
INTERIOR HEIGHT	<82">
WHEELBASE	<272">
FUEL CAPACITY	<66.5 GALLONS>
DEF TANK CAPACITY	<7.2 GALLONS>
FRESH WATER CAPACITY	<96 GALLONS>
GREY WATER CAPACITY	<44 GALLONS>
BLACK WATER CAPACITY	<44 GALLONS>
LP CAPACITY	<20 GALLONS/84 LBS.>
EXTERIOR STORAGE CAPACITY	<42 CU. FT.>

BED & BATH

The roomy and functional design makes living and traveling in the Veracruz a pleasure. The master bedroom offers great storage with a large wardrobe, dresser, and two nightstands. The deluxe hardwood vanity, medicine and linen cabinets, and shower skylight make the bathroom luxurious and spacious.

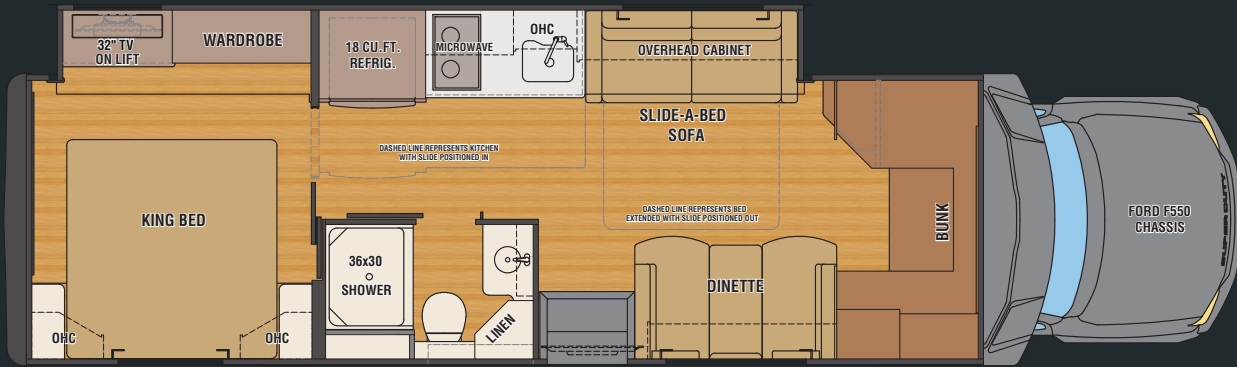




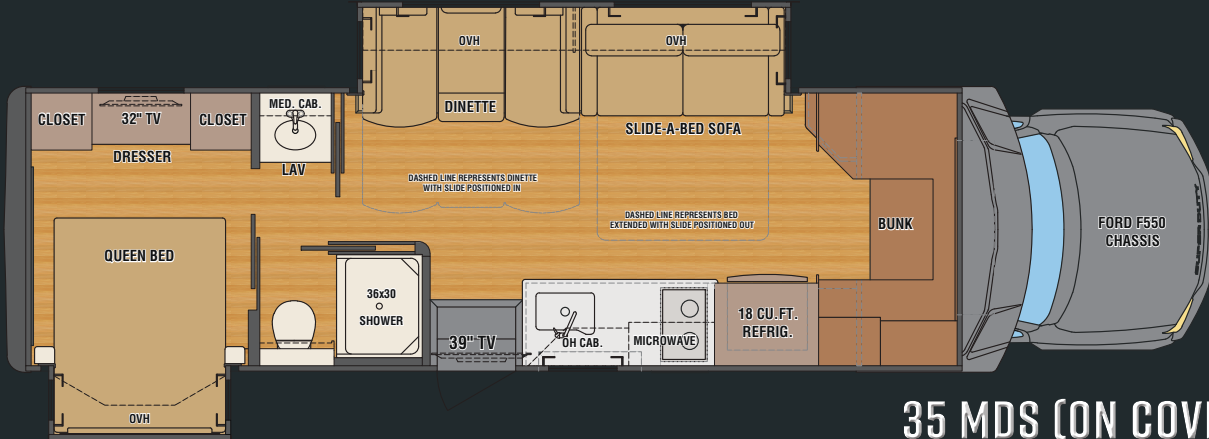
KITCHEN

The kitchen of the Veracruz features solid-maple, hardwood cabinets with plenty of storage and soft closing drawers. Standard appliances include a stainless steel microwave, two-burner electric induction cooktop, and an 18 cubic foot residential refrigerator. The 40" LED TV and soundbar home theater system are on a swing arm, allowing you to view the TV from any location in the main living area.

FLOOR PLAN OPTIONS

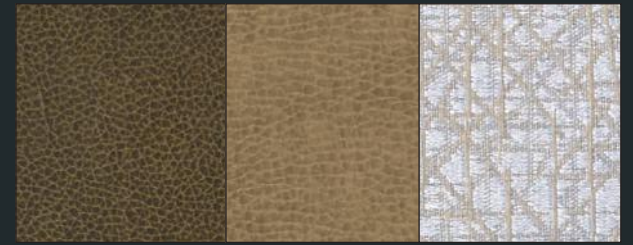


35 FWS



35 MDS (ON COVER)

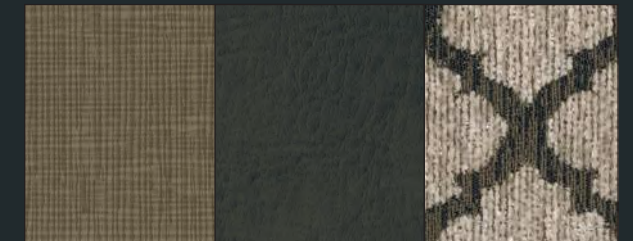
INTERIOR OPTIONS



ICED LATTE

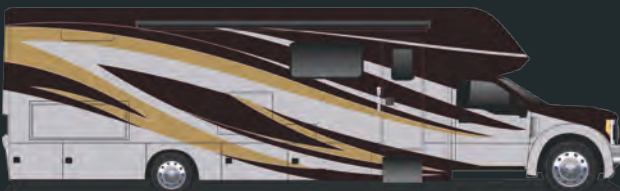


CRACKED PEPPER (PICTURED)



DRIFTWOOD

PAINT OPTIONS



CABERNET



PEBBLE (ON COVER)



BEACHWOOD

STANDARD & OPTIONAL FEATURES

CONSTRUCTION

- Smooth high gloss one-piece fiberglass wall surface
- Two inch vacuum laminated sidewalls with welded tubular aluminum frame
- One and a half-inch high density foam insulation in sidewalls and roof
- Welded tubular aluminum roof truss system with framed cutouts
- One-piece crowned fiberglass roof
- Two-piece molded fiberglass rear cap and bumper system
- Steel framed luggage box system with marine grade composite liner
- High strength vacuum laminated floor including: welded aluminum superstructure, 1.5" high density foam insulation, cosmolite continuously reinforced fiberglass composite, and 1.5" welded tubular steel truss system

EXTERIOR FEATURES

- Choice of three paint colors
- Factory undercoating
- Side-swing luggage doors with paddle latch and dual latch points
- Girard Lateral Arm Electric Awning with integrated LED lights
- Keyless entry door
- Aluminum clad slide-out covers
- Frameless tinted windows with tilt opening design and screens
- 12,000 lb. hitch with seven-way tow connector and two inch ball
- Equalizer fully automatic four-point leveling system with Bluetooth app

ENTERTAINMENT SYSTEMS

- SYNC@3 premium touch-screen dash radio with navigation system and -Sirius XM
- Side and rear view color cameras
- A 40" LED TV in the living room
- Samsung 2.1 Soundbar System with

wireless subwoofer in living room

- Samsung BluRay Player in living room
- A 32" LED TV in bedroom
- Pre-wired for In-Motion SD and Stationary HD satellite systems

INTERIOR FEATURES

- Solid-maple, hardwood cabinets with raised-panel doors
- Hidden cabinet door hinges and soft closing full extension drawers
- Polished solid surface kitchen, dinette, bath and bedroom countertops
- Ultra-soft touch dinette with slide-out drawer storage
- Ultra-soft touch slide-a-bed sofa with queen size sleeper
- Stonecast deep bowl kitchen sink with solid surface covers
- Decorative kitchen backsplash
- Deluxe fabric window treatments
- Congoleum easy care one-piece vinyl floor
- Rubber entry step treads with composite risers
- iRelax Memory Foam mattress
- Slide n' store cabover bed, 48" x 78", with privacy curtain and ladder
- Padded headboard with decorator bedspread, pillow shams and accent pillows

ELECTRICAL SYSTEMS

- Multiplex Lighting System with color touch screen controller and Bluetooth app
- LED recessed ceiling lighting
- LED décor lighting in living room, dining room and bath
- 8KW Onan Quiet Diesel Generator with auto-gen start system
- 8D AGM house battery with 2,000 watt inverter
- 50 amp electrical panel
- 12V tank heaters for grey and black

tanks

- USB charging in living room and bedroom
- Pre-wired for solar charging system

BATH SYSTEMS & AMENITIES

- Deluxe hardwood cabinets with solid surface countertops
- Fiberglass one-piece shower with glass enclosure and shower skylight
- Whole house water filter
- Black tank flush system
- Porcelain electric macerator toilet

CHASSIS AND CAB

- Ford F550 XLT Chassis Cab, 19,500 lb. GVWR
- Ford 6.7L Power Stroke V8 Turbo Diesel B20 Engine with 330HP/750 lb. ft. torque
- TorqShift 6-Speed automatic transmission
- Four-wheel power disc brakes with anti-lock brake system
- P225/70R19.5 tires on polished forged aluminum wheels (steel rear inner duals)
- Dual alternators, 332 amp total
- Automotive cab construction designed for occupant protection
- Power windows with one-touch switches
- Keyless power cab locking system with key fob and door pad
- Perimeter anti-theft system
- Power/heated side mirrors
- Power adjustable driver's pedals
- Tilt and telescopic steering wheel with audio and cruise controls
- Cab seat folding armrests
- Dual-fuel tanks with auto crossover and 66.5 gallon capacity
- Front and side airbag supplemental restraint system for driver and passengers

- Engine exhaust brake
- Auto on/off headlights
- 12V and 110V/400Watt dash outlets
- Trailer brake controller
- Driver and passenger platform running boards
- Outside temperature display
- Hill start assist

APPLIANCES & UTILITIES

- Stainless steel appliance package
- 18 cu. ft. residential refrigerator with automatic ice maker
- Over-the-range convection microwave oven
- Two-burner electric induction cooktop
- Ten gallon LP/110V electric water heater
- Two 20,000 BTU LP Gas Furnaces with Electronic Ignition
- Dual 13.5 roof air conditioners with heat pumps

POPULAR OPTIONS

- Ford Factory installed four-wheel drive system
- Theater seating IPO standard 72" sofa
- 60" x 74" queen size iRelax Memory Foam bed (35FWS only)
- Carpet IPO vinyl floor in bedroom
- Exterior entertainment center with 32" LED TV, AM/FM/CD/DVD player and speakers
- Winegard Trav'ler HD or SD In-motion Satellite Dome
- 50 amp power cord reel
- Dual solar panels, 175 watts each
- LP quick disconnect line



**LUXURY
QUALITY RVs.
FOR WORK,
PLAY,
OR BOTH.**

Renegade
RV
REVGROUP

your
DESIGNED FOR LIFE

52216 SR 15, BRISTOL IN 46507

888.522.1126

RENEGADERV.COM

YOUR VERACRUZ DEALER:

**LAMESA REC
VAN**

LaMesaRV.com

800-496-8778